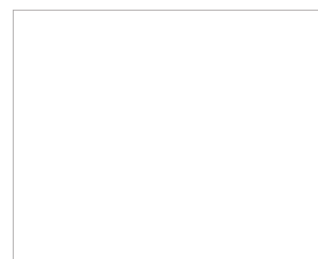
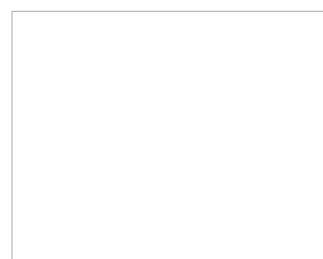


# LaserENERGY

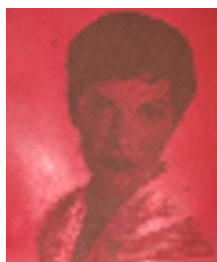
CO2 LASER ENGRAVING AND CUTTING SYSTEM

## LASER TECHNOLOGY



- Automatic tool change
- Tool storage up to 20 stations
- Linear velocity up to 60 meters per minute
- Automatic forward velocity and disc rotation control
- Automatic and centralized lubrication

**Applications:** Leather, Fabrics, Textiles, Ceramic, Wood, Acrylic, PVC, Slate, among other materials.





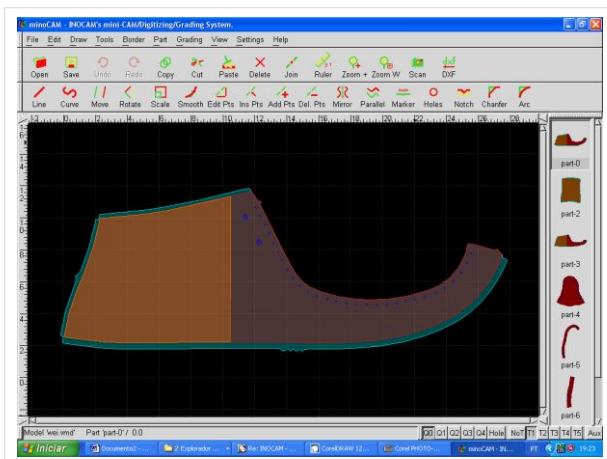
# LaserENERGY

## TECHNICAL CHARACTERISTICS

- ▶ CNC machine, 3 axis, with a useful working area of 3,2 x 1,6 meters
- ▶ Axis Z reach, up to 350mm
- ▶ Linear velocity up to 60 meters per minute
- ▶ Design capacity in marbles, granites, slates, etc.
- ▶ Automatic tool changing system
- ▶ Tool storage up to 20 stations
- ▶ 0,1mm precision
- ▶ Works under sphere spindles and linear guides
- ▶ Base table made totally of non oxidizable materials
- ▶ Automatic forward velocity and disc rotation control

## LaserEnergy SYSTEM ADVANTAGES

- ▶ Easy to program in tri dimensional pieces
- ▶ High velocity and precision
- ▶ High reliability
- ▶ On line technical service



## Contacts

### ZIPOR - Equipamentos e Tecnologia Industrial, S.A.

Rua dos Açores, 278; Zona Industrial Nº 1  
3700-018 S. João da Madeira  
PORTUGAL

Tel +351 256 831 411  
Fax +351 256 831 412  
email sales@zipor.com

GPS 40° 54' 11.68" N 8° 28' 49.02" W



# WWW.ZIPOR.COM